

NORTH TEXAS SPORTING SPANIEL CLUB 2017

We would like to welcome you to our Winter, Season opening Field Trial. This Field Trial is open to Springer Spaniels only! Our event is open to all English Springer Spaniels 6 months of age or older.

Event Type: AKC Springer Spaniel Field trial

Open/Amateur/Puppy

Official Premium List. A.K.C. Licensed English springer spaniel Field Trial

L.B.J. National Grasslands :FS-Unit # 4 Alvord. Tx.. From Fort Worth Take Hwy 287 North take exit FM 1655 turn right on 2265 .Unit #4 entrance will be on the right . We will have direction signs out to guide you.

The event will be held January 21/22, 2017 with lunches available both days

- Open All Age 1st Series begins at 8:00 AM Saturday, 1/21/2017
- Amateur All Age 1st Series begins at 8:00 AM Sunday, 1/22/2017
- Puppy Stakes will be held between the 2nd and 3rd series of the OPEN Stakes Pheasants and/or chukars will be used for the Open and Amateur Stakes.

Pigeons and/or chukars will be used for the puppy stakes

Open and Amateur All Age \$120. Puppy \$40.

This Field Trial Event is held under the rules and procedures of The American Kennel Club

Our Honorable judges for the Open & Amateur events on both days will be:

The Honorable Alex and Alice Stewart.

Our Judges for the puppy stakes are TBD

NO alcohol consumption will be permitted on the grounds until the trial is completely done- per AKC policy.

No Smoking in the Grasslands. There are no motorized vehicles allowed on the National grasslands so **there will be NO shuttles of any type on the field.**

Note: Entry Express is handling ALL entries for this event !

[Www.Entryexpress.net](http://www.Entryexpress.net)

Entry Express takes the job of handling our entries and paperwork, allowing us to spend our time bringing you a better Field Trial.

If you still want to mail in entries and pay by check, you can still do that too.

NOTE: If mailing entries You will mail them to Entry Express.. Not to the club.

Please note our closing date of 11:59 PM January 9, 2017. You can make your entries on the internet right up to the cut off time.

Because the club does not handle the entries there are NO provisions for squeezing in late entries... So get them in EARLY

Entries After the cutoff date will not be accepted.

ALL entries must include the \$4.50 Administrative fee per entry.

You will need separate entries for each dog and each event

All persons entering the field will be required to have articles of Blaze orange clothing on as per AKC regulations...

Amendment in the Standard Procedure for Spaniel Field Trials:

A blaze orange garment or item of clothing must be worn by all participants including, but not limited to, handlers, owners, gunners, bird planters, stewards ,Judges, club members, visitors, etc. The blaze orange item must be visible and be worn above the waist, with a hat or sash as a minimum.

Veterinarian

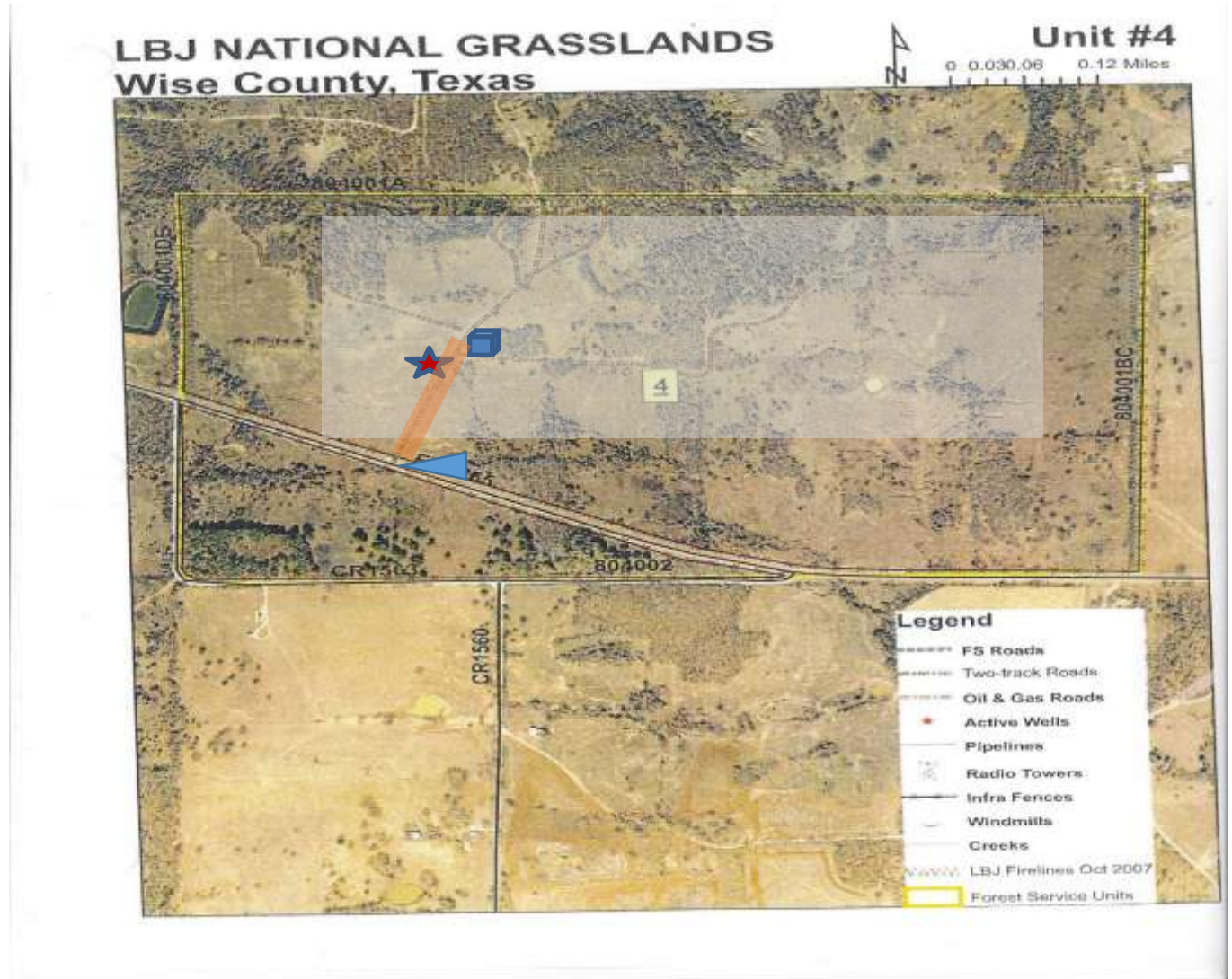
Denton Animal ER 4145 S I35 Ste 101 Denton, TX 76201
940)271-1200

DIRECTIONS

From Fort Worth: Take Hwy 287 North take exit FM 1655 turn right on 2265 Unit #4 entrance will be on the right

We will have direction signs out to guide you.

NTSSC FIELD TRIAL UNIT 4



Grey shaded area is planned to be used for the field trial/hunt test.

Blue box marker designates the porta potty which will be staged at the Y in the road.

The blue triangle is entrance gate to the road we will be using to access the grounds.

The red rectangle represents the parking which will be alongside the road just inside the entrance gate. Vehicles will park as close to the road as possible without blocking access. Red Star is for landing for emergency helicopter if needed.

First aid station will be available by the porta potty. All club officials will be in contact via radio at all times during the event to facilitate any type of emergency response needed.