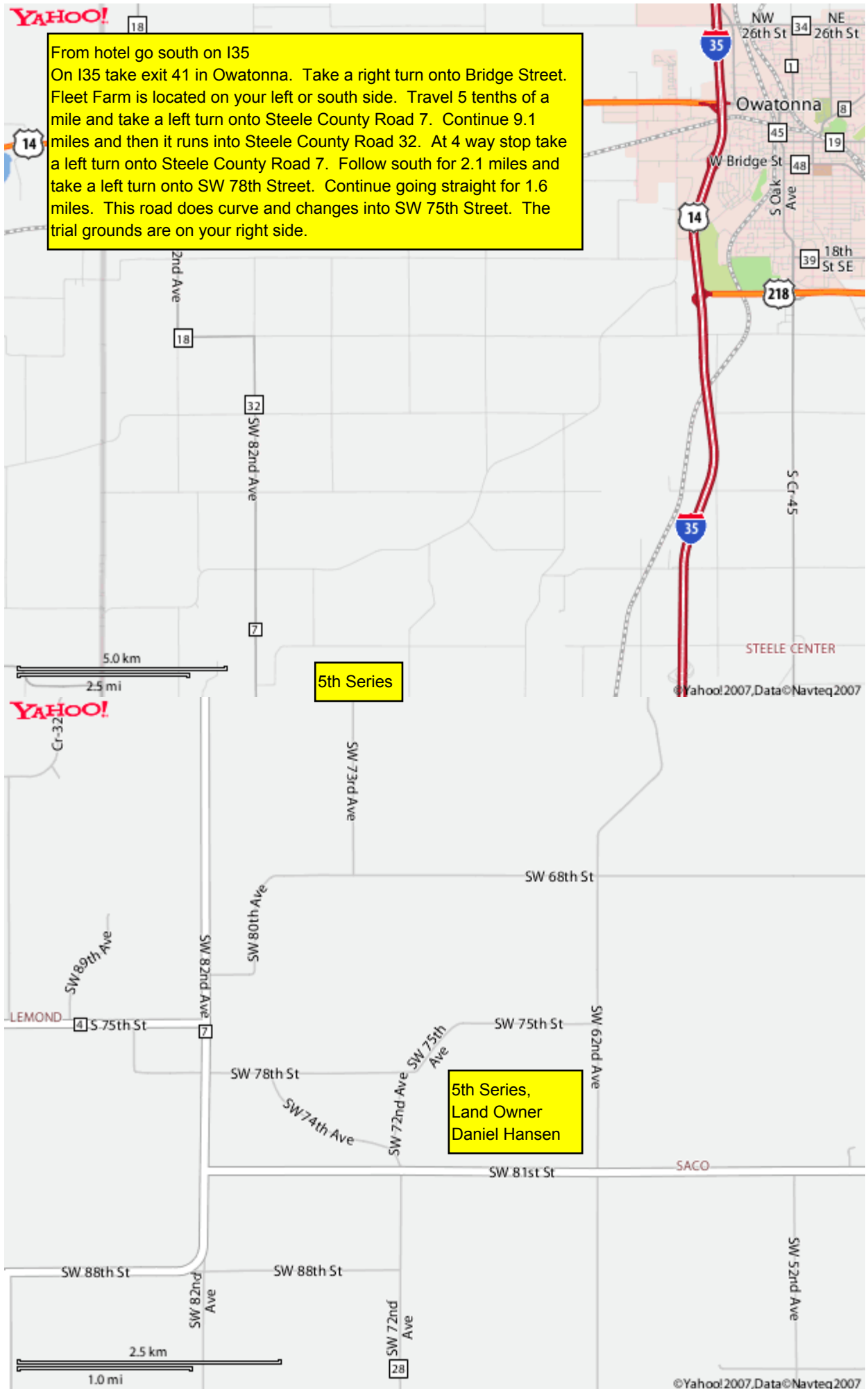


From hotel go south on I35
 On I35 take exit 41 in Owatonna. Take a right turn onto Bridge Street. Fleet Farm is located on your left or south side. Travel 5 tenths of a mile and take a left turn onto Steele County Road 7. Continue 9.1 miles and then it runs into Steele County Road 32. At 4 way stop take a left turn onto Steele County Road 7. Follow south for 2.1 miles and take a left turn onto SW 78th Street. Continue going straight for 1.6 miles. This road does curve and changes into SW 75th Street. The trial grounds are on your right side.



5th Series

5th Series,
 Land Owner
 Daniel Hansen

